

# STREAM+



2023-11 v1

STREAM+ allows end users to send and receive data via the Iridium® Satellite Constellation anywhere on the planet

Introducing the revolutionary STREAM+ - a cutting-edge Iridium transceiver package that offers affordable, two-way connectivity anywhere on the planet. With STREAM+, you can effortlessly access data through a variety of file management services – including Amazon Web Service (AWS), providing flexibility related to data transmission.

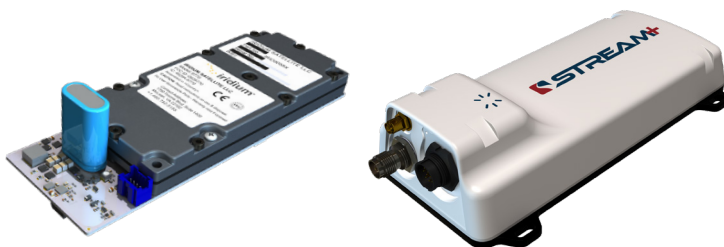
Designed with size, weight, and power constraints in mind, STREAM+ is the ultimate solution for field applications. It offers a wide range of industry-standard protocols, features, and inputs, providing flexible integration and installation options that drastically reduce development costs and time-to-market.

Powered by the Iridium Certus® 100 midband service and Iridium Messaging Transport™ (IMT™), the STREAM+ allows for secure file transmission and reception without worrying about intermittent connectivity disruptions. With the ability to transfer data up to a few megabytes, STREAM+ guarantees connectivity, no matter where you are.



## Key features

- Simplified IoT solution
- Optimized for size, weight & power
- IP-based connection via satellite
- Send larger data amounts, quickly
- API serial port, power control & status lines
- Low development cost
- AWS subscriptions are required only for IMT service utilizing active AWS services



**Connected. Everywhere.**

# STREAM+ TECHNICAL SPECIFICATIONS

2023-11 v1

MECHANICAL DESIGN		
<b>Dimensions</b>	L 205 mm x W 105 mm x H 48 mm	L 8.08" x W 4.13" x H 1.88"
<b>Weight</b>	620 g	21.9 oz
<b>Mounting</b>	10 Pin Panel Mount, Receptacle, Male Pins. Bayonet Lock Connector	
<b>Antenna</b>	GPS Antenna – Female SMA Connector	
	Iridium Antenna – Female TNC Connector	
<b>Enclosure</b>	Integrated Aluminium Heat Sink	
	Pressure Equalizing Gore Vent	
PHYSICAL PRODUCT		
<b>uController</b>	Controls file and message transfers	
	Drives the status lines	
	Provides a simple JSON API through the serial port	
<b>Power Control Line</b>	Allows an external controller to switch the device on/off	
<b>Status Lines</b>	Message/File Inbox state Message/File Outbox state	
<b>Hardware Interfacing</b>	RS232 interface	
	RS485 interface (half-duplex)	
<b>Flash Memory</b>	Extra storage for large file transfers	
<b>GNSS</b>	GNSS to support stand alone telemetry solutions	
	External active antenna	
	Open drain pulse per second	
	Iridium Antenna	
	External passive antenna	
<b>Ingress Protection</b>	IP67	
FIRMWARE FUNCTIONALITY	ELECTRICAL DESIGN	
Bootloader	10-40 V DC Supply	
Serial Communication	Protected Open Drain Outputs	
Logging	30 W Supply Power	
GNSS	LED Status Indicator	
OTA Communication	Automotive Pulse Protected	
IMT Support	Safe Shutdown (supercapacitor)	
Low Power Mode	Standby Mode Current 20 mA, at 12 V	
PPP (passthrough)	Shutdown Mode Current 4.5 µA, at 10-40 V	
SSH (from client terminal)	Transmit & Receive Power 10 W Max Avg, 30 W Max Peak	
	Data speed 22 Kb/s up, 88 Kb/s down	

**Connected. Everywhere.**



FOR FURTHER SALES  
INFORMATION CONTACT:  
[sales@metocean.com](mailto:sales@metocean.com)

**CANADA - HQ**  
11 Thornhill Drive  
Dartmouth, Nova Scotia  
B3B 1R9  
+1 902 468 2505

**UNITED STATES**  
1750 Tysons Blvd, Suite 1500  
Office 1547, McLean, Virginia  
22102  
+1 844 728 286

**UNITED KINGDOM**  
Hilldale Farm, Titchfield Lane  
Wickham, Hampshire  
PO17 5NZ  
+44 1489 888 555