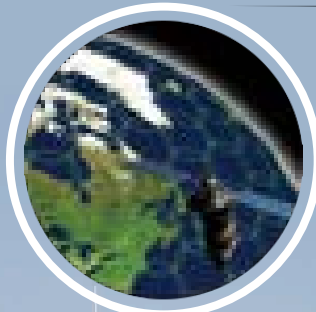


iTrac

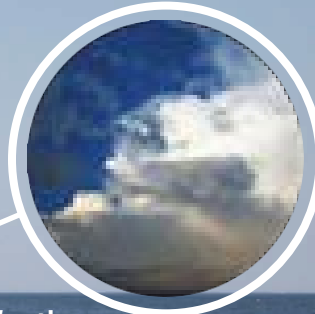
VESSEL MONITORING SYSTEM



E-mail



Positional Reports



Weather



Navigation

JouBeh's iTrac Vessel Monitoring System

Locate commercial and private vessels at sea

The iTrac system consists of a bi-directional satellite communicator which transmits vessel position reports at specified intervals. The iTrac system may be remotely programmed to change the reporting interval. The iTrac system consists of a satellite communicator and a marine grade antenna. An internal battery for backup is provided to maintain all parameters in the case of a power failure. The vessel provides normal operating power. The communicator is housed in an IP68 rated ruggedized enclosure.



11 Thornhill Drive, Suite 201
Dartmouth, Nova Scotia, Canada B3B 1R9
Tel: +1-902-405-4428 | Fax: +1-902-405-4438
sales@joubeh.com | www.joubeh.com



Made, Serviced and Supported in Canada

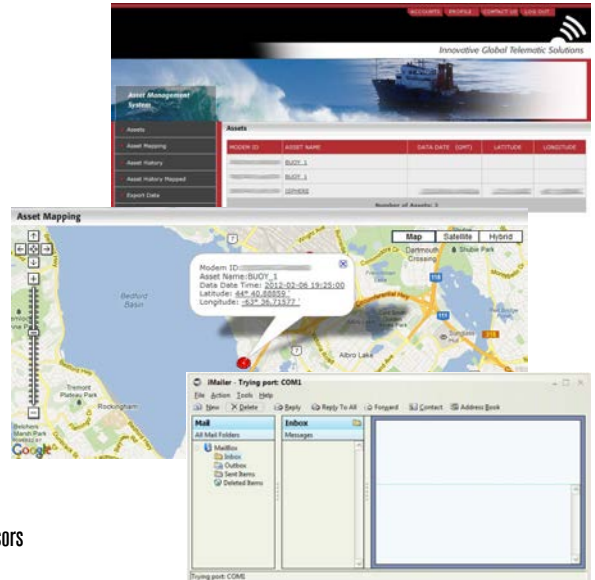


Key Features

- Department of Fisheries and Oceans Canada certified for monitoring vessels
- An automatically generated message is transmitted 24 times a day consisting of vessel position, heading, speed and time
- Two-way communications via satellite telemetry
- Message frequency can be updated from shore, to generate and transmit a position at various time periods
- LED's on the unit provides indication of power on/off, transmit/receive and status
- Units are GPS-equipped (10 m (33 feet) CEP, 45 sec cold start)
- Data is sent via E-mail, internet and/or direct IP to end users
- Geofencing capability provided• Shock and Vibration tested to ISTA 1A specifications
- Temperature tested from -40°C to + 70°C (-40°F + 158°F)
- Surge and reverse polarity protected
- Distress/panic button included
- Manufactured under ISO 9001 compliance
- IP68 rated enclosure (1m for 1 hour)

Optional Features

- Communications port for future expandability, including PC communications and external sensors
- At sea e-mail capability
- Emergency vessel position trigger
- Weather reports



Technical Specifications

Length	20.63 cm (8.125 inches)
Width	16.25 cm (6.400 inches)
Height	6.350 cm (2.500 inches)
Weight	0.884 kg (1.95 LBS)
Transmit frequency	1616 MHz to 1626.5 MHz
Transmit power	1.6 Watts
Receive frequency	1616 MHz to 1626.5 MHz
Sensitivity(minimum)	-118 dbm
Battery requirements	12 volt Lead Acid Battery (Supplied)
Power requirements	12 to 32 VDC (External Power)
Power use (measured at the battery points)	Transmit 2.5 A max.monitoring
Position Accuracy	100 mAGPS ±10 m (nominal)
Operating temperature	-40 to 70° C (-40°F + 158°F)
Non-operating temperature	-40 to 70° C (-40°F + 158°F)
Shock &Vibration	ISTA 1A specifications

